

**no localized version available: Bathymetrie des  
Jahres 1998 der Deutschen Bucht von EasyGSH-  
DB**

<b>File Identifier</b>	60b0a3bc-ec49-4ebf-aa4b-795dc249d4df
<b>Last Modified</b>	2019-07-03T13:00:53.960+02:00

Reference System..... 3  
Data Identification..... 4  
Distribution..... 10  
Data Quality..... 12  
Target system..... 16

## Metadata

**File Identifier:**60b0a3bc-ec49-4ebf-aa4b-795dc249d4df  
**Charset:**UTF-8  
**Parent Identifier:**8cb6ab19-817f-49c1-ba00-fa8ca233af0c  
**Hierarchy Level:**dataset  
**Date Stamp:**2019-02-19T07:02:39.358+01:00  
**Last Modified:**2019-07-03T13:00:53.960+02:00  
**Metadata Standard Name:**ISO 19115:2003 NOKIS-Profil  
**Metadata Standard Version:**20160629

## Contact

**Role:**point of contact  
**Name:**Bundesanstalt für Wasserbau (BAW)  
**Organisation Name:**Bundesanstalt für Wasserbau (BAW)

**Voice:**+49 (0) 40 81908-0                      **Facsimile:**+49 (0) 40 81908-373

### Address

Wedeler Landstraße 157  
 22559 Hamburg  
 Germany

**Online Resource:**Bundesanstalt für Wasserbau

**Role:**point of contact  
**Name:**Romina Ihde  
**Organisation Name:**Bundesanstalt für Wasserbau (BAW)

**Voice:**+49 (0) 4081908-394                      **Facsimile:**+49 (0) 4081908-373

### Address

Wedeler Landstraße 157  
 22559 Hamburg  
 Germany

**Online Resource:**[www.baw.de](http://www.baw.de)

## Locale

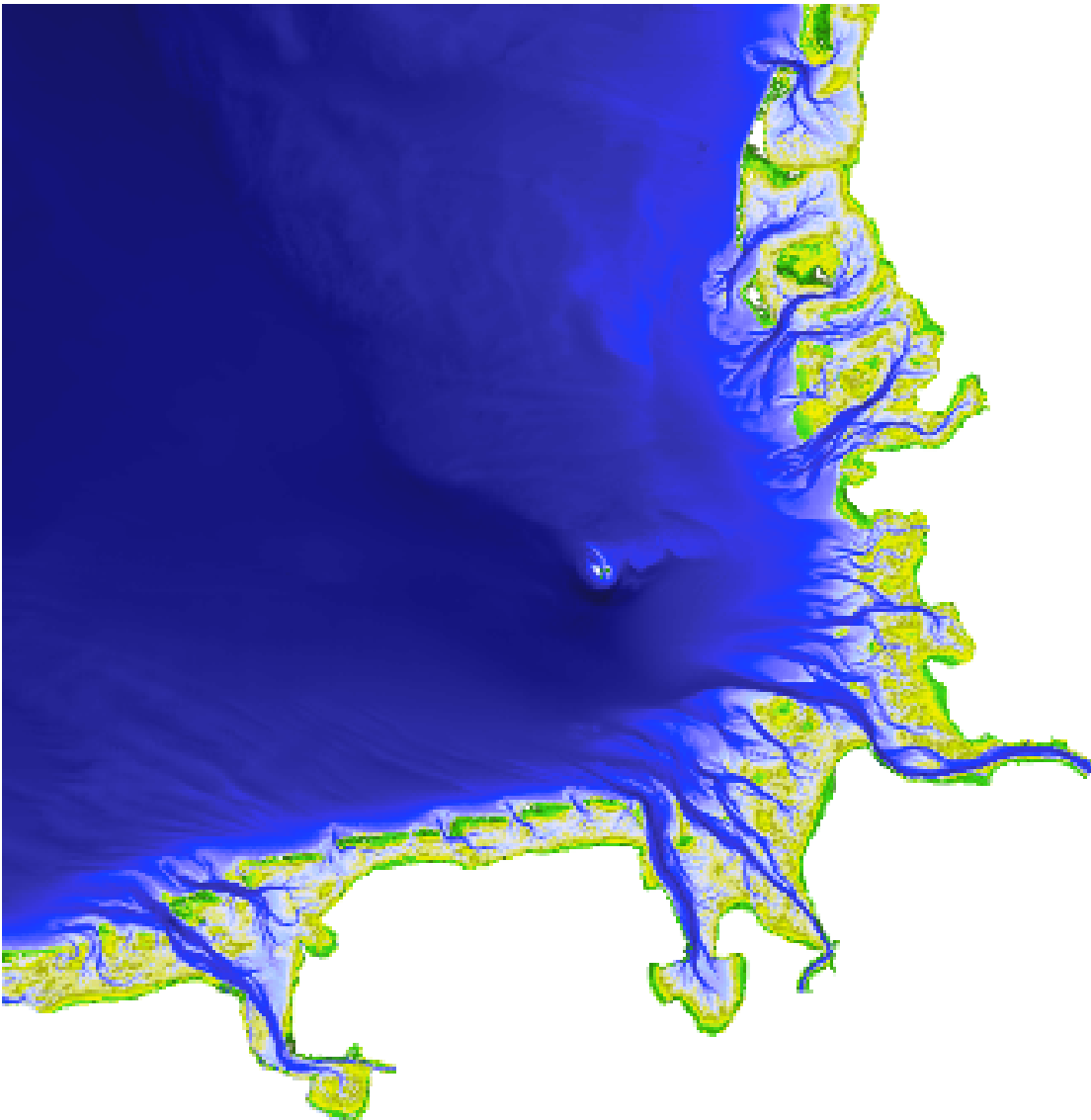
German

<b><u>Reference System</u></b>
<b>Reference System</b>
<i>Reference System ID</i>
<b>Code:</b> EPSG:25832 <b>Code Space:</b> <a href="https://epsg.io/25832">https://epsg.io/25832</a> <b>Version:</b> 1.0

<b>Data Identification</b>	
<b>Citation</b>	
<p><b>Title:</b>Bathymetrie des Jahres 1998 der Deutschen Bucht von EasyGSH-DB(<i>German</i>)  <b>Alternate Title:</b>Bathymetry from 1998 of German Bight from EasyGSH-DB(<i>German</i>)  <b>Date:</b>2019-02-19+01:00 (creation), 2019-02-19+01:00 (publication)  <b>Edition:</b> <i>N/A</i>  <b>Edition Date:</b> <i>N/A</i></p>	
<i>Identifier</i>	
<p><b>Code:</b><a href="https://registry.gdi-de.org/id/de.bund.baw.mdi-dienste/60b0a3bc-ec49-4ebf-aa4b-795dc249d4df">https://registry.gdi-de.org/id/de.bund.baw.mdi-dienste/60b0a3bc-ec49-4ebf-aa4b-795dc249d4df</a></p>	
<i>Responsible Party</i>	
<p><b>Role:</b>publisher  <b>Name:</b>Bundesanstalt für Wasserbau (BAW)  <b>Organisation Name:</b>Bundesanstalt für Wasserbau (BAW)</p>	
<b>Voice:</b> +49 (0) 40 81908-0	<b>Facsimile:</b> +49 (0) 40 81908-373
<i>Address</i>	
<p>Wedeler Landstraße 157  22559 Hamburg  Germany</p>	
<b>Online Resource:</b> Bundesanstalt für Wasserbau	
<p><b>Presentation Form:</b>digital map  <b>Series:</b> <i>N/A</i>  <b>Other Citation Details:</b>Bathymetrie 1998  <b>Collective Title:</b><a href="http://www.mdi-dienste.baw.de/#d2c44f35-164b-40a6-a5d1-e46e50c5aa7c">http://www.mdi-dienste.baw.de/#d2c44f35-164b-40a6-a5d1-e46e50c5aa7c</a>  <b>ISBN:</b> <i>N/A</i>  <b>ISSN:</b> <i>N/A</i>  <b>old name:</b> <i>N/A</i></p>	
<p><b>Abstract:</b>Die Bathymetrie interpoliert zum 01.07.1998, im Rahmen des mfund Projektes EasyGSH-DB (Erstellung anwendungsorientierter, synoptischer Referenzdaten zur Geomorphologie, Sedimentologie und Hydrodynamik in der Deutschen Bucht).(<i>German</i>)  <b>Purpose:</b>Der Nutzungsschwerpunkt von EasyGSH-DB Daten liegt in der Forschung und Lehre.(<i>German</i>)  <b>Credit:</b> <i>N/A</i>  <b>Status:</b>under development</p>	
<b>Point Of Contact</b>	
<p><b>Role:</b>point of contact  <b>Name:</b>Peter Milbradt</p>	

<b>Organisation Name:</b> smile consult GmbH (smile)	
<b>Voice:</b> +49 (0) 511 543617-40	<b>Facsimile:</b> +49 (0)511 543617-66
Address	
Schiffgraben 11 30159 Hannover Germany	
<b>Online Resource:</b> smile consult GmbH	
<b>Role:</b> originator	
<b>Name:</b> smile consult GmbH	
<b>Organisation Name:</b> smile consult GmbH (smile)	
<b>Voice:</b> +49 (0)511 543617-66	<b>Facsimile:</b> +49 (0)511 543617-66
Address	
Schiffgraben 11 30159 Hannover Germany	
<b>Online Resource:</b>	
<b>Resource Maintenance:</b> <i>N/A</i>	

## Graphic Overview



**File Description:**Jahresbathymetrie 1998 [m NHN]  
**File Type:** *N/A*

**Resource format:** *N/A*

## Descriptive Keywords

**Keyword:**Höhe(*German*)  
**Type:**theme

## *Thesaurus Name*

**Title:**GEMET - INSPIRE themes, version 1.0(*German*)  
**Alternate Title:**Elevation(*English*)  
**Date:**2008-06-01+02:00 (publication)  
**Edition:** *N/A*  
**Edition Date:** *N/A*  
**Identifier:** *N/A*  
**Responsible Party:** *N/A*  
**Presentation Form:**document hardcopy

**Series:** *N/A*  
**Other Citation Details:** *N/A*  
**Collective Title:** *N/A*  
**ISBN:** *N/A*  
**ISSN:** *N/A*  
**old name:** *N/A*

**Keyword:** opendata(*German*), inspireidentifiziert(*German*), EasyGSH-DB(*German*), mFUND-Projekt: EasyGSH-DB(*German*), mFUND-FKZ: 19F2004C(*German*), Wasserstraßen und Gewässer(*German*)  
**Type:** theme  
**Thesaurus Name:** *N/A*

**Keyword:** Deutsche Bucht(*German*)  
**Type:** place

### *Thesaurus Name*

**Title:** UMTHEs Thesaurus(*German*)  
**Alternate Title:** German Bight(*English*)  
**Date:** 2017-06-01+02:00 (revision)  
**Edition:** *N/A*  
**Edition Date:** *N/A*  
**Identifier:** *N/A*  
**Responsible Party:** *N/A*  
**Presentation Form:** document hardcopy  
**Series:** *N/A*  
**Other Citation Details:** *N/A*  
**Collective Title:** *N/A*  
**ISBN:** *N/A*  
**ISSN:** *N/A*  
**old name:** *N/A*

**Keyword:** Bathymetrie(*German*)  
**Type:** parameter

### *Thesaurus Name*

**Title:** UMTHEs Thesaurus(*German*)  
**Alternate Title:** bathymetry(*English*)  
**Date:** 2017-06-01+02:00 (revision)  
**Edition:** *N/A*  
**Edition Date:** *N/A*  
**Identifier:** *N/A*  
**Responsible Party:** *N/A*  
**Presentation Form:** document hardcopy  
**Series:** *N/A*  
**Other Citation Details:** *N/A*  
**Collective Title:** *N/A*  
**ISBN:** *N/A*

<b>ISSN:</b> <i>N/A</i> <b>old name:</b> <i>N/A</i>
<hr/> <b>Keyword:</b> 1998( <i>German</i> ) <b>Type:</b> temporal <b>Thesaurus Name:</b> <i>N/A</i>
<hr/> <b>Keyword:</b> Umwelt( <i>German</i> ) <b>Type:</b> theme
<b><i>Thesaurus Name</i></b>
<b>Title:</b> OGDD-Kategorie( <i>German</i> ) <b>Alternate Title:</b> Environment( <i>German</i> ) <b>Date:</b> 2012-12-10+01:00 (publication) <b>Edition:</b> <i>N/A</i> <b>Edition Date:</b> <i>N/A</i> <b>Identifier:</b> <i>N/A</i> <b>Responsible Party:</b> <i>N/A</i> <b>Presentation Form:</b> <i>N/A</i> <b>Series:</b> <i>N/A</i> <b>Other Citation Details:</b> <i>N/A</i> <b>Collective Title:</b> <i>N/A</i> <b>ISBN:</b> <i>N/A</i> <b>ISSN:</b> <i>N/A</i> <b>old name:</b> <i>N/A</i>
<b>Resource Specific Usage:</b> <i>N/A</i>
<b>Resource Constraints</b>
<b><i>Constraints</i></b>
<b>Use Limitation:</b> Nutzungsbedingungen: Für die Lehre und Forschung zu verwenden, nicht tauglich für Navigation.
<b><i>Legal Constraints</i></b>
<b>Use Limitation:</b> Nutzungsbedingungen: Dieser Datensatz steht gemäß der CC BY 4.0 Lizenz zur freien Nutzung zur Verfügung (Creative Commons Namensnennung 4.0 International). <b>Access Constraints:</b> other restrictions, license <b>Use Constraints:</b> other restrictions, license <b>Other Constraints:</b> Nutzungsbedingungen: { "id": "cc-by-4.0", "name": "CC BY 4.0 Lizenz", "url": "https://creativecommons.org/licenses/by/4.0/deed.de", "quelle": "Quelle: Creative Commons 2013"}
<b>Security Constraints:</b> <i>N/A</i>
<b>Aggregation info:</b> <i>N/A</i> <b>Keyword:</b> bathymetry, German Bight, terrain model, North Sea, topography



<b>Spatial Representation Type:</b> grid <b>Spatial Resolution:</b> <i>N/A</i> <b>Language:</b> German <b>Character Set:</b> UTF-8 <b>Topic Category:</b> elevation <b>Environment Description:</b> <i>N/A</i>
<b>Extent</b>
<b>Description:</b> <i>N/A</i> <b>Bounding Polygon:</b> <i>N/A</i>
<i>Geographic Bounding Box</i>
<b>Extent Type:</b> <i>N/A</i> <b>West:</b> 6.50 <b>East:</b> 9.12 <b>South:</b> 53.27 <b>North:</b> 55.12 <b>Bounding Box in other coordinate system:</b> <i>N/A</i>
<b>Geographic Description:</b> <i>N/A</i>
<i>Temporal Extent</i>
<b>Period:</b> <i>N/A</i> <b>Instant:</b> 1998-07-01T13:00:00+02:00
<b>Spatial Temporal Extent:</b> <i>N/A</i> <b>Vertical Element:</b> <i>N/A</i>
<b>Supplemental Information:</b> <i>N/A</i> <b>Observed Property:</b> <i>N/A</i> <b>DOI Identifier:</b> in Erstellung

<b>Distribution</b>		
<b>Distribution Format:</b> <i>N/A</i>		
<b>Distributor</b>		
<i>Distributor Contact</i>		
<b>Role:</b> point of contact		
<b>Name:</b> Bundesanstalt für Wasserbau (BAW)		
<b>Organisation Name:</b> Bundesanstalt für Wasserbau (BAW)		
<b>Voice:</b> +49 (0) 40 81908-0		<b>Facsimile:</b> +49 (0) 40 81908-373
Address		
Wedeler Landstraße 157 22559 Hamburg Germany		
<b>Online Resource:</b> Bundesanstalt für Wasserbau		
<i>Distribution Order Process</i>		
<b>Fees:</b> Es gelten keine Bedingungen		
<b>Planned Available Date:</b> 2019-02-20T11:10:19+01:00		
<b>Ordering Instructions:</b> Es gelten keine Bedingungen		
<b>Turnaround:</b> Es gelten keine Bedingungen		
<i>Distributor Format</i>		
<b>Name:</b> GeoTIFF		
<b>Version:</b> 1.0		
<b>Amendment Number:</b> <i>N/A</i>		
<b>Specification:</b> GeoTIFF		
<b>File Decompression Technique:</b> <i>N/A</i>		
<i>Distributor Transfer Options</i>		
<b>Units of Distribution:</b> Download		
<b>Transfer Size:</b> 2000.0		
<b>Online</b>		
Description	Linkage	Function
<b>GetCoverage – Download des Coverages als GeoTiff (On-the-fly).</b>	<a href="http://mdi-dienste.baw.de/geoserver/EasyGSH_Bathy_WCS/wcs?service=WCS&amp;version=2.0.1&amp;request=GetCoverage&amp;coverageId=Bath">http://mdi-dienste.baw.de/geoserver/EasyGSH_Bathy_WCS/wcs?service=WCS&amp;version=2.0.1&amp;request=GetCoverage&amp;coverageId=Bath</a> tiff	download
<b>Die Bathymetrie, Datenquellen-, Datendichtekarten und</b>	<a href="https://mdi-de.baw.de/easygsh/assets/Download/EasyGSH_Download_Bathymetrie_geotiff_1998.zip">https://mdi-de.baw.de/easygsh/assets/Download/EasyGSH_Download_Bathymetrie_geotiff_1998.zip</a>	download

Description	Linkage	Function
<b>Metadaten in einer zip-Datei für das Jahr 1998.</b>		

Offline: *N/A*

## Transfer Options

Units of Distribution: Layer

Transfer Size: 2000.0

Online

Description	Linkage	Function
<b>GetCoverage – Download des Coverages als GeoTiff (On-the-fly).</b>	<a href="http://mdi-dienste.baw.de/geoserver/EasyGSH_Bathy_WCS/wcs?service=WCS&amp;version=2.0.1&amp;request=GetCoverage&amp;coverageId=Bathymetrie_1998">http://mdi-dienste.baw.de/geoserver/EasyGSH_Bathy_WCS/wcs?service=WCS&amp;version=2.0.1&amp;request=GetCoverage&amp;coverageId=Bathymetrie_1998</a>	download
<b>DescribeCoverage – Eigenschaften des WCS Layers Bathymetrie 1998.</b>	<a href="http://mdi-dienste.baw.de/geoserver/EasyGSH_Bathy_WCS/wcs?service=WCS&amp;version=2.0.1&amp;request=DescribeCoverage&amp;coverageId=Bathymetrie_1998">http://mdi-dienste.baw.de/geoserver/EasyGSH_Bathy_WCS/wcs?service=WCS&amp;version=2.0.1&amp;request=DescribeCoverage&amp;coverageId=Bathymetrie_1998</a>	information
<b>Die Bathymetrie, Datenquellen- und Datendichtekarten in einer zip-Datei für das Jahr 1998.</b>	<a href="https://mdi-de.baw.de/easygsh/assets/Download/EasyGSH_Download_Bathymetrie_1998.zip">https://mdi-de.baw.de/easygsh/assets/Download/EasyGSH_Download_Bathymetrie_1998.zip</a>	download

Offline: *N/A*

<b>Data Quality</b>
<b>Data Quality Scope</b>
<b>Level:</b> dataset <b>Extent:</b> N/A <b>Level Description:</b> N/A
<b>Data Quality Report</b>
<b>Name of Measure:</b> N/A <b>Measure Identification:</b> N/A <b>Measure Description:</b> N/A <b>Evaluation Method Type:</b> indirect <b>Evaluation Method Description:</b> N/A
<i>Evaluation Procedure</i>
<b>Title:</b> Bathymetrie des Jahres 1998 der Deutschen Bucht von EasyGSH-DB ( <i>German</i> ) <b>Alternate Title:</b> Bathymetry from 1998 of German Bight from EasyGSH-DB( <i>English</i> ) <b>Date:</b> 2019-02-20+01:00 (creation) <b>Edition:</b> N/A <b>Edition Date:</b> N/A <b>Identifier:</b> N/A <b>Responsible Party:</b> N/A <b>Presentation Form:</b> digital map <b>Series:</b> N/A <b>Other Citation Details:</b> N/A <b>Collective Title:</b> N/A <b>ISBN:</b> N/A <b>ISSN:</b> N/A <b>old name:</b> N/A
<b>Date and Time:</b> 2019-02-20T11:17:27+01:00
<i>Conformance Result</i>
<b>Specification</b>
<b>Title:</b> VERORDNUNG (EG) Nr. 1089/2010 DER KOMMISSION vom 23. November 2010 zur Durchführung der Richtlinie 2007/2/EG des Europäischen Parlaments und des Rates hinsichtlich der Interoperabilität von Geodatensätzen und –diensten( <i>German</i> ) <b>Alternate Title:</b> Verordnung (EG) Nr. 1089/2010 der Kommission vom 23. November 2010 zur Durchführung der Richtlinie 2007/2/EG des Europäischen Parlaments und des Rates hinsichtlich der Interoperabilität von Geodatensätzen und –diensten( <i>German</i> ), COMMISSION REGULATION (EU) No 1089/2010 of 23 November 2010 implementing Directive 2007/2/EC of the European Parliament and of the Council as regards interoperability of spatial data sets and Services( <i>English</i> ) <b>Date:</b> 2010-12-08+01:00 (publication) <b>Edition:</b> N/A <b>Edition Date:</b> N/A <b>Identifier:</b> N/A

<b>Responsible Party:</b> <i>N/A</i> <b>Presentation Form:</b> document hardcopy <b>Series:</b> <i>N/A</i> <b>Other Citation Details:</b> <i>N/A</i> <b>Collective Title:</b> <i>N/A</i> <b>ISBN:</b> <i>N/A</i> <b>ISSN:</b> <i>N/A</i> <b>old name:</b> <i>N/A</i>
<b>Explanation:</b> GDI-DE Testsuite <b>Pass:</b> true
<b>Quantitative Result:</b> <i>N/A</i> <b>Data quality type:</b> DQ_DomainConsistency
<b>Data Quality Lineage</b>
<b>Statement:</b> Die Bathymetrie des Jahres 1998 berechnet von smile consult GmbH für das mfund Projekt EasyGSH-DB (Erstellung anwendungsorientierter, synoptischer Referenzdaten zur Geomorphologie, Sedimentologie und Hydrodynamik in der Deutschen Bucht).( <i>German</i> )
<i>Process Step</i>
<b>Description:</b> Postprocessing: bathymetrische Kennwertanalyse <b>Rationale:</b> <i>N/A</i> <b>Datestamp:</b> <i>N/A</i>
<b>Processor</b>
<b>Name:</b> smile consult GmbH <b>Organisation Name:</b> smile consult GmbH (smile)
<b>Voice:</b> +49 (0)511 543617-66 <b>Facsimile:</b> +49 (0)511 543617-66
<b>Address</b>
Schiffgraben 11 30159 Hannover Germany
<b>Online Resource:</b>
<b>Source</b>
<b>Description:</b> Plausibilisierte gerasterte Bathymetrie( <i>German</i> ) <b>Scale Denominator:</b> <i>N/A</i> <b>Source Reference System:</b> <i>N/A</i> <b>Source Citation:</b> <i>N/A</i> <b>Source Extent:</b> <i>N/A</i>
<b>Source Step</b>
<b>Description:</b> Plausibilisierung <b>Rationale:</b> <i>N/A</i> <b>Datestamp:</b> <i>N/A</i>

<b>Processor:</b> <i>N/A</i>
Source
<b>Description:</b> Gerasterte Rasterbathymetrie( <i>German</i> ) <b>Scale Denominator:</b> <i>N/A</i> <b>Source Reference System:</b> <i>N/A</i> <b>Source Citation:</b> <i>N/A</i> <b>Source Extent:</b> <i>N/A</i>
Source Step
<b>Description:</b> Datenbasierte Simulation <b>Rationale:</b> <i>N/A</i> <b>Datestamp:</b> <i>N/A</i> <b>Processor:</b> <i>N/A</i>
Source
<b>Description:</b> Funktionales Bodenmodell der Bathymetrie( <i>German</i> ) <b>Scale Denominator:</b> <i>N/A</i> <b>Source Reference System:</b> <i>N/A</i> <b>Source Citation:</b> <i>N/A</i> <b>Source Extent:</b> <i>N/A</i>
Source Step
<b>Description:</b> Plausibilisierung und Einpflege <b>Rationale:</b> <i>N/A</i> <b>Datestamp:</b> <i>N/A</i> <b>Processor:</b> <i>N/A</i>
Source
<b>Description:</b> Messdaten( <i>German</i> ) <b>Scale Denominator:</b> <i>N/A</i> <b>Source Reference System:</b> <i>N/A</i> <b>Source Citation:</b> <i>N/A</i> <b>Source Extent:</b> <i>N/A</i>
Source Step
<b>Description:</b> Extern: Aufbereitung <b>Rationale:</b> <i>N/A</i> <b>Datestamp:</b> <i>N/A</i> <b>Processor:</b> <i>N/A</i>
Source
<b>Description:</b> Rohdaten <b>Scale Denominator:</b> <i>N/A</i> <b>Source Reference System:</b> <i>N/A</i> <b>Source Citation:</b> <i>N/A</i> <b>Source Extent:</b> <i>N/A</i>

<b>Source Step:</b> <i>N/A</i>
<b>Source:</b> <i>N/A</i>
<b>Nokis Report:</b> <i>N/A</i>
<b>Shoreline Extension:</b> <i>N/A</i>

**Target system**

@ @TODO.Name@ @geoportal